

# Automatic Shrink Tank mod. TR8



## Characteristics y Technical data

**Exterior dimensiones:** 1170 x 1050 x 1500 mm

**Interior dimensiones:** 800 x 600 x 418 mm

**Immersion depth:** 250 mm

**Electrical connection:** 380V 3F (220V)

**Pneumatical connection:** 6 bar

**Power:** 44 Kw

**Water connection:** 2"



Simple and intuitive control panel  
10 editable programs

- Strong construction in stainless steel Aisi304
- Water heating by electrical resistances or by connection to steam supply.
- Programmable water temperature up to 92°
- Automatic water inlet
- Connection with upper vapor outlet
- Conforms to CE safety and prevention standards

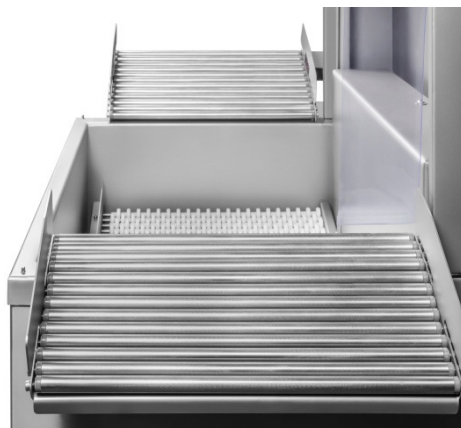


Adjustable stand-by time  
Submersible tilted inner tray  
Disassembly for easy and quick cleaning  
Maximum support 30 kg

Simple and robust equipment adaptable to packaging lines



Adaptable to any automatic packaging line



Inclined inner tray easily to be removed



Input tray with photodetector



Product Output Roller Tray