

Automatic Shrink Tank mod. TR8



Characteristics y Technical data

Exterior dimensiones: 1170 x 1050 x 1500 mm

Interior dimensiones: 800 x 600 x 418 mm

Immersion depth: 250 mm

Electrical connection: 3F-400V(1F-230V)

Pneumatical connection: 6 bar

Power: 22 Kw

Water connection: 2"



Simple and intuitive control panel
10 editable programs

- Strong construction in stainless steel Aisi304
- Water heating by electrical resistances or by connection to steam supply.
- Programmable water temperature up to 92°
- Automatic water inlet
- Connection with upper vapor outlet
- Conforms to CE safety and prevention standards

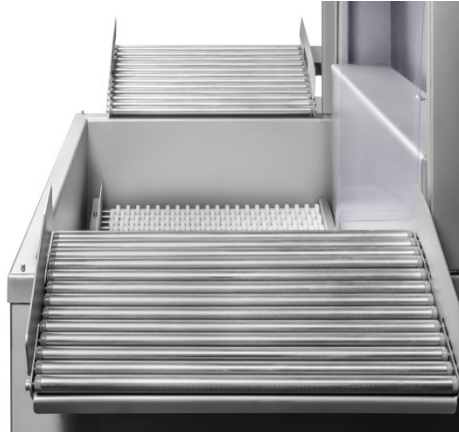


Adjustable stand-by time
Submersible tilted inner tray
Disassembly for easy and quick cleaning
Maximum support 30 kg

Simple and robust equipment adaptable to packaging lines



Adaptable to any automatic packaging line



Inclined inner tray easily to be removed



Input tray with photodetector



Product Output Roller Tray