
CATALOGUE

industrial and Commercial range





Introduction

ZERMAT

Zermat, the machine for any professional who need a demanding vacuum packaging. An extensive catalog where you will find the packaging machine which best suits your needs. High quality machines and latest features, with a simple, robust and durable design.

Series of models and accessories to make the perfect packaging of any product which meet every production need. Maximum versatility and all the features available for an impeccable packaging. Adaptable options to complement the vacuum function, such as gas injection for packaging in modified atmosphere or automatisms to increase production, offering more working comfort to the user.

Since 1979 Zermat manufactures, innovates and improves. Four decades of experience in vacuum packaging have allowed the development of a catalog of equipment and accessories to achieve the perfect finish on each product, protecting it against oxidation. Models assembled through our manufacturing partners with production plants in Germany, Austria, Spain, the Netherlands and Italy.

Each model has undergone rigorous performance and hardness tests before being placed on the market. Units, such as the MEDIUM series CV1000, have been in continuous production since 1985. The most popular SMALLL range offers a 3-year warranty.

Good service and assistance to our customers; personalized attention and advisory, sale and after-sales services through our network of authorized installers, or through the commercial delegation in each country, ensure our support to each Zermat customer to use our tools in their daily production.

From a kitchen, factory or any business in need of demanding vacuum packaging, Zermat is the right tool.

Since 1979 separating oxygen and adding value in each package.

ZERMAT INDEX

VACUUM PACKAGING MACHINES

SMALL

Table-Top

	JAZZVAC
09	ATOM
11	MINI
11	MINI+
12	30
12	35
13	42
13	42+

	BLUESVAC
15	35
15	42
16	42+
16	42 Vertical
17	52

	RAPVAC
19	32
19	42

	ROCKVAC
21	42
21	42+

MEDIUM

Industry

	MEDIUM
24	CV100
25	CV200
26	CV800
27	CV1000

MEDIUM+

Semi-automatic

	MEDIUM +
30	Cv1000+
31	Cv1000 PRO
32	Cv1100+
33	Cv1400

LARGE

Double chamber

	LARGE
36	DC500
37	DC750
38	DC850
39	DC950

EXTRALARGE

Automatic

	EXTRALARGE
42	CV910
44	DC950 PRO

SHRINKING AND DRYING

Sincronizable

	SHRINKING
48	TR7
	TtR8
49	TR10
	DRYING
50	DR1

TRAY SEALERS

Tray sealing

	TRAYSEALING
54	TB2
55	TB3
56	TB4

ACCESSORIES

For the packaging

60	CASING FEEDER SR90
60	VACTESTER
61	VACGIVER
61	ZERMAT Gas analyzer OXYBABY





SMALL

SMALL SERIE

Table-top packaging machines; different models arranged in four ranges focused on each use; from ultra-compact models with high vacuum and basic functions, to units with the most advanced configuration and features, such as the touch screen control panel and Smartphone applications, the synchronized printer of labels, or the automatic detector for meat or liquids. On all SMALL series models; maintenance program - multicycle / maintenance and oil change in three steps - Powerful Busch vacuum pumps - hygienic design - Simple and robust construction. 3 years warranty

JAZZVAC

SIMPLE AND ROBUST
Packaging machine line with basic functions.

A high vacuum is reached (1 mbar) in all models, programmable vacuum level time, sealing time adjusting and extra functions, such as the maintenance program and multicycle for marinating or impregnations. Buttons for immediate cycle interruption with or without bag sealing.

MODEL	EXT.DIMMENSIONS
ATOM	450 x 310 x 385 mm
MINI	450 x330 x 295mm
MINI+	450 x 330 x 345 mm
MINI+ oval lid	450 x 330 x 380 mm
30	525 x 450 x 358mm
35	525 x 450 x 358mm
42	525 x 480 x 430 mm
42+	610 x 480 x 470 mm

OPTIONS
DOUBLE SEAL BAR
TROLLEY

JAZZVAC OPTIONS



DOUBLE SEAL BAR
for models 42/42+



TROLLEY
Stainless steel support table with shelves and wheels.

JAZZVAC ATOM

For home or laboratory
450 x 310 x 385 mm
(Long x Width x High)



Atom model, the most compact ZERMAT professional vacuum packing machine. Ideal model for domestic use, in bars or kitchens with little space, points of sale, laboratories, etc.

- CHARACTERISTICS**
- High-quality stainless-steel construction.
 - Control of the vacuum level and sealing of the bag.
 - High quality methacrylate oval lid.
 - Inner chamber with base and curved corners for easy cleaning.

Inner chamber dimensions: 220 x 270 x 85 mm
Seal bars: 1 x 220 mm
Vacuum Pump: Busch 3 m³/h
Cycle vacuum time: 15-50 sec.
Connection: 220 v
Weight: 22 Kg



Top quality finishes.



Insert plate for the best fit of the product.



Seal bar with double sealing of the Bag and easily removable, wire-less.



JAZZVAC MINI

Compact and reliable

450 x 330 x 395 mm

(Long x Width x High)



Model Mini model, one of the smallest packaging machines from ZERMAT. A perfect model for using in laboratories or small shops, domestic or semi-professional kitchens.

CHARACTERISTICS

- High-quality stainless-steel construction.
- Control of the vacuum level and sealing of the bag.
- Flat, high quality methacrylate lid.
- Inner chamber with base and curved corners for easy cleaning.

Inner chamber dimensions: 280 x 310 x 85 mm

Seal bars: 1 x 280 mm

Vacuum Pump: Busch 4 m³/h

Cycle vacuum time: 15-50 sec.

Connection: 220 v

Weight: 25 Kg

JAZZVAC MINI+

High chamber and powerful vacuum pump

450 x 330 x 395 mm

(Long x Width x High)



Powerful 8m³ / h Busch vacuum pump in a compact chamber model; fast and accurate full vacuum function. This model is aimed for demanding users to reach the maximum vacuum packaging in the shortest possible time.

CHARACTERISTICS

- High-quality stainless-steel construction.
- Control of the vacuum level and sealing of the bag.
- Flat or oval methacrylate lid (optional).
- Inner chamber with base and curved corners for easy cleaning.

Inner chamber dimensions:

280 x 310 x 85 mm (flat lid)

280 x 310 x 120 mm (oval lid)

Seal bars: 1 x 280 mm

Vacuum Pump: Busch 8 m³/h

Cycle vacuum time: 15-50 sec.

Connection: 220 v

Weight: 29 Kg

Vacuum cycle faster than in the Mini model

JAZZVAC 30

The most sold

525 x 450 x 358 mm

(Long x Width x High)



Robust and reliable vacuum packaging machine with simple control panel. Maintenance program. Programmable vacuum level and sealing time. Sealing system with double sealing of the bag.

CHARACTERISTICS

- High-quality stainless-steel construction.
- Control of the vacuum level and sealing of the bag.
- High quality methacrylate oval lid.
- Inner chamber with base and curved corners for easy cleaning.

Chamber dimensions: 350 x 370 x 150 mm

Seal bars: 1 x 350 mm

Vacuum Pump: Busch 8 m³/h

Cycle Vacuum time: 15-50 sec.

Connection: 220 v

Weight: 35 Kg

JAZZVAC 35

Power and minimum space

525 x 450 x 358 mm

(Long x Width x High)



Vacuum cycle faster than in the JazzVac 30.

The most powerful packaging machine of the economic JAZZVAC series. Compact model for fast and maximum vacuum packaging of bags with measures up to 35x37cm. Programmable vacuum level y time.

CHARACTERISTICS

- High-quality stainless-steel construction.
- Control of the vacuum level and sealing of the bag.
- High quality methacrylate oval lid.
- Inner chamber with base and curved corners for easy cleaning.

Chamber dimensions: 350 x 370 x 150 mm

Seal bars: 1 x 350 mm

Vacuum Pump: Busch 16m³/h

Cycle Vacuum time: 15-50 sec.

Connection: 220 v

Weight: 48 Kg

JAZZVAC 42

Most versatile measure

525 x 480 x 430 mm

(Long x Width x High)



42cm cm wide vacuum chamber with. Medium capacity packaging machine with maximum reliability. Simple and robust. Inner chamber prepared for the packaging of liquids. Vacuum level programmable by time. Maintenance program.

CHARACTERISTICS

- High-quality stainless-steel construction.
- Control of the vacuum level and sealing of the bag.
- High quality methacrylate oval lid.
- Inner chamber with base and curved corners for easy cleaning.
- Easy oil change without tools.

Chamber dimensions: 420 x 370 x 150 mm

Seal bars: 1 x 420 mm (second seal bar optional)

Vacuum Pump: Busch 16 m³/h

Cycle Vacuum time: 15-50 sec.

Connection: 220 v

Weight: 58 Kg

JAZZVAC 42+

Higher capacity

610 x 480 x 470 mm

(Long x Width x High)



High capacity and maximum reliability packaging machine. Inner chamber prepared for the packaging of liquids.

Time programmable vacuum level. Maintenance program.

CHARACTERISTICS

- Stainless steel construction.
- Vacuum control by time (seconds).
- Control of sealing time (seconds).
- Stop key to interrupt the cycle (with or without sealing).
- Methacrylate oval lid.
- Inner chamber with round edges for easy cleaning.
- Easy oil change without tools.

Inner chamber dimensions: 460 x 420 x 180 mm

Seal bars: 1 x 420 mm (2 seal bars, optional)

Vacuum Pump: Busch 16 m³/h

Packaging cycle time: 15-50 sec.

Connection: 220 v

Weight: 63 Kg

BLUESVAC

High-performance packaging machines, with an advanced control panel, that allows editing and memorizing programs. Ideal for medium and industrial kitchens, shops and specialized stores, supermarkets or small construction sites. The control panel allows adjusting the vacuum level and setting additional time in seconds. The sealing time and ventilation of the chamber can also be edited in each program. The BLUESVAC series have the possibility of incorporating the installation for gas injection in a bag, packaged in MAP (optional)

MODEL	EXT. DIMENSIONS
35	440 x 550 x 420 mm
42	480 x 520 x 450 mm
42+	480 x 610 x 470 mm
42 vertical	580 x 480 x 795 mm
42 Bi-active	480 x 610 x 470 mm
52	700 x 530 x 440 mm

OPTIONS
Gas injection
ACS Control panel
Label printer
Cut-off seal
Trolley
Double seal bar
Bi-active sealing



Zermat vacuum packaging machines allow to seal all kinds of bags, from smooth or embossed plastics, in thicknesses of high microns or shrink and special materials.

BLUESVAC 35

High performance and compact design

440 x 550 x 420 mm

(Long x Width x High)



High performance model and compact chamber. Complete control panel with memorizable programs. Powerful vacuum pump with easy oil change for maintenance. The most compact of the Bluesvac series.

CHARACTERISTICS

- High-quality stainless-steel construction.
- Control panel with 10 programs.
- Progressive softair inlet.
- Control of the vacuum level and sealing of the bag.
- High quality methacrylate oval lid.
- Inner chamber with base and curved corners for easy cleaning.
- Easily oil change without tools.

Chamber inner dimensions: 350 x 370 x 180 mm

Seal bars: 1 x 350 mm

Vacuum Pump: Busch 16 m³/h

Connection: 220 v

Weight: 49 Kg

BLUESVAC 42

The most complete

480 x 520 x 450 mm

(Long x Width x High)



very versatile packaging machine. Programmable vacuum level by sensor. Control panel with memorizable programs. Available with options such as gas injection, Led control panel, synchronizable printer.

CHARACTERISTICS

- High-quality stainless-steel construction.
- Control of the vacuum level and sealing of the bag
- High quality methacrylate oval lid.
- Inner chamber with base and curved corners for easy cleaning.

Inner chamber dimensions: 420 x 370 x 180 mm

Seal bars 1 x 420 mm (2 x 420 mm)

Vacuum Pump: Busch 21 m³/h

Connection: 220 v

Weight: 62 Kg

BLUESVAC 42 + Big chamber with more space

480 x 610 x 470 mm
(Long x Width x High)



The BLUESVAC 42+ offers more chamber space for packaging bags with sizes up to 42x60cm. Control panel with regulation of vacuum level by percentage. Ideal model for the packaging of large pieces, butchers, fish, textiles, components.

CHARACTERISTICS

- Stainless steel construction.
- Control panel with 10 programs.
- Progressive softair inlet.
- Sensor vacuum control.
- Control of sealing time (seconds).
- Vacuum pump maintenance program.
- Stop key to interrupt the cycle (with or without sealing).
- Inner chamber with round edges.
- Easy oil change without tools.
- Possibility of double sealing bar.

Inner chamber dimensions: 420 x 460 x 180 mm
Seal bars: 1 x 420 mm (2 x 420 mm)
Vacuum Pump: Busch 21 m³/h
Connection: 220 v
Weight: 67 Kg

BLUESVAC 42 VERTICAL Reverse configuration

580 x 480 x 795 mm
(Long x Width x High)



Special configuration model, with the chamber positioned vertically. It is ideal for packaging grain or liquid products in block or in stand-up formats.

CHARACTERISTICS

Extra design molds are available for placement inside the chamber, to support bags with side gussets (coffee or rice packaging) or holding bags with liquids or powder products / grain.

Inner chamber dimensions: 400 x 370 x 120 mm
Seal bars: 1 x 420 mm
Vacuum Pump: Busch 21 m³/h
Connection: 220 v
Weight: 79 Kg

BLUESVAC 52 The biggest

700 x 530 x 440 mm
(Long x Width x High)



Large capacity packaging machine with two sealing bars, which allow packaging of bags up to 42x60cm. Control panel with memorizable programs.

CHARACTERISTICS

- Stainless steel construction.
- Control panel with 10 programs.
- Double seal bar.
- Progressive softair inlet.
- Sensor vacuum control.
- Control of sealing time (seconds).
- Stop key to interrupt the cycle (with or without sealing).
- High quality methacrylate oval lid.
- Inner chamber with base and curved corners for easy cleaning.

Inner chamber dimensions:
520 x 410 x 185 mm (with 2x seal bars)
620 x 360 x 185 mm (with 1x seal bar)

Seal bars:
a) 2 x 410 mm
b) 1 x 620 mm
Vacuum Pump: Busch 21 m³/h
Connection: 220 v
Weight: 72 Kg

BLUESVAC Options



GAS INJECTION
Installation for inert gas in the bag.



ACS CONTROL PANEL
Memorizable programs and extra functions.



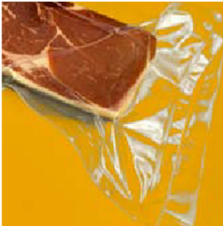
LABEL PRINTER
Synchronizable to the ACS Control panel.



TROLLEY
Stainless steel table with wheels and shelf.



CUT-OFF SEAL
Seal bar with cut.



BI-ACTIVE SEALING
Top and bottom sealing system.



DOUBLE SEAL BAR
Available for the models 42 and 42+ (model 52).

RAPVAC

The packaging machine with a minimalist design and a hygienic chamber. Two models available with the new flat platform and polycarbonate oval lid and extra resistance. ACS control panel with synchronized label printer connection (optional).

MODEL	EXT. DIMENSIONS
32	400 x 534 x 385 mm
42	480 x 534 x 396 mm

OPTIONS
Gas injection
Label printer
Cut-off seal

RAPVAC OPTIONS



GAS INJECTION
Installation for inert gas in the bag.



LABEL PRINTER
Synchronizable to the ACS Control panel.



CUT-OFF SEAL
Seal bar with cut.



RAPVAC 32

Design and performance

400 x 534 x 385 mm
(Long x Width x High)



32cm sealing bar packaging machine; the newest configuration, flat base chamber and high strength polycarbonate lid with dome design.

- CHARACTERISTICS**
- Stainless steel construction.
 - Control panel with 10 programs.
 - ACS color control panel.
 - Easily removable welding without cables.
 - Progressive softair inlet.
 - Sensor vacuum control.
 - Control of sealing time (seconds).
 - Stop key to interrupt the cycle (with or without sealing).
 - Extra oval polycarbonate lid.
 - Easy oil change without tools.
 - Possibility of programming label printing.

Inner chamber dimensions: 320 x 320 x 103 mm
Seal bars 1x320mm
Vacuum Pump: Busch 8 m³/h
Connection: 220V
Weight: 35 Kg

RAPVAC 42

Wide chamber

480 x 534 x 396 mm
(Long x Width x High)



Model with 42cm seal bar. Higher capacity and vacuum power ensure the perfect packaging of large products or several bags in each cycle. ACS control panel with memorizable programs and special functions, such as the closing of cans, food marinade, liquid detector or the multicycle system.

- CHARACTERISTICS**
- Stainless steel construction.
 - Control panel with 10 programs.
 - ACS color control panel.
 - Easily removable welding without cables.
 - Progressive softair inlet.
 - Vacuum control sensor.
 - Control of sealing time (seconds).
 - Stop key to interrupt the cycle (with or without sealing).
 - Extra oval polycarbonate lid.
 - Easy oil change without tools.
 - Possibility of programming label printing.

Inner chamber dimensions: 420 x 360 x 114 mm
Seal bars: 1x420mm
Vacuum Pump: Busch 16 m³/h
Connection: 220v
Weight: 46 Kg

ROCKVAC

Last generation equipment: all available options and touch screen with app connection for the information to the user. Advanced design machines with one-piece body, seamless and with all curved corners, for maximum hygiene and easy cleaning. Modern and attractive design.

MODEL	EXT. DIMENSIONS
42	493 x 528 x 440 mm
42+	493 x 616 x 440 mm

OPTIONS
Gas injection

Label printer

ROCK OPTIONS



GAS INJECTION
Installation for inert gas in the bag.



LABEL PRINTER
Synchronizable to the ACS Control panel.

ROCKVAC 42

The ultimate in connectivity

493 x 528 x 440 mm

(Long x Width x High)



Model designed for the intelligent management of vacuum packaging in any business. It provides information instantly and allows remote program editing. Control panel with touch screen and connectivity to the app to check productivity from your mobile device.

CHARACTERISTICS

- Stainless steel construction.
- Vacuum control by time (seconds).
- Control of sealing time (seconds).
- Vacuum pump maintenance program.
- stop key to interrupt the cycle (with or without sealing).
- Flat methacrylate lid.
- Inner chamber with round edges for easy cleaning.

Inner chamber dimensions: 420 x 370 x 180 mm

Seal bar: 1x420mm

Vacuum Pump: Busch 21 m³/h

Connection: 220v

Weight: 64 Kg

ROCKVAC 42+

Spacious and modern

493 x 616 x 440 mm

(Long x Width x High)

Machine version with a great capacity chamber for the packaging of large bags, up to 40x50cm. Machine body built in one piece, without joints or seams, with rounded inner and outer edges of the chamber for maximum hygiene. Control panel with touch screen and connectivity to the app for the configuration of programs and checking of the productivity from your mobile device

CHARACTERISTICS

- Stainless steel construction.
- Vacuum control by time (seconds).
- Control of sealing time (seconds).
- Vacuum pump maintenance program.
- stop key to interrupt the cycle (with or without sealing).
- Flat methacrylate lid.
- Inner chamber with round edges for easy cleaning.

Inner chamber dimensions: 420 x 460 x 180 mm

Seal bar: 1x420mm

Vacuum Pump: Busch 21 m³/h

Connection: 220v

Weight: 72 Kg



MEDIUM SERIES

High capacity packaging machines for medium productions. Models with large and spacious chambers. Possibility of configuring the sealing bars in the most suitable arrangement for each size of bag or products to be packed. Machines of solid and durable construction, in continuous production since 1985.

MEDIUM

CV100

Top-Table machine with industrial chamber

1015 x 560 x 420 mm

(Long x Width x High)



Top-table vacuum packaging machine with high capacity.

Unique packaging machine in its category: industrial chamber capacity and compact machine body for positioning on a table or counter.

CHARACTERISTICS

- Large capacity chamber.
- Stainless steel construction.
- Control panel with 20 programs.
- Progressive softair inlet.
- Sensor vacuum control.
- Control of sealing time (seconds).
- Stop key to interrupt the cycle (with or without sealing).
- Oval methacrylate lid.
- Easy maintenance.

Inner chamber dimensions: 960 x 435 x 140 mm

Seal bars:

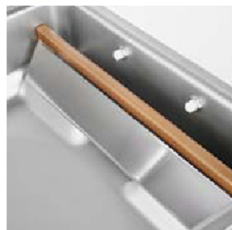
- a) 1 x 820 mm + 1 x 390 mm
- b) 2 x 410 mm
- c) 2 x 900 mm (with flat lid)

Vacuum pump: Busch 21 m³/h

Connection: 220 v

Weight: 106 Kg

CV 100 Options



GAS INJECTION

Installation for inert gas in the bag



FLAT LID

Flat methacrylate lid



CUT-OFF SEAL

OF THE BAGS
Seal bar with cut



TROLLEY

Stainless steel universal table with wheels



ACS CONTROL PANEL

Vacuum lung effect (especially liquids).

CV200

Robustness and simplicity

720 x 680 x 1000 mm

(Long x Width x High)



Tight chamber measurements and powerful vacuum pump suitable for continuous production.
Simple handling.

CHARACTERISTICS

- Large capacity chamber.
- Stainless steel construction.
- Control panel with 20 programs.
- Progressive softair inlet.
- Sensor vacuum control.
- Control of sealing time (seconds).
- Stop key to interrupt the cycle (with or without sealing).
- Oval methacrylate lid.
- Easy maintenance.

Inner chamber dimensions

590 x 470 x 170 mm

590 x 470 x 280 mm (oval lid option)

Seal bars:

- a) 520 + 420 mm
- b) 2 x 550 mm
- c) 2 x 450 mm

Vacuum Pump Busch 40 m³/h

Connection: 380 v - 3F (220 v)

Weight: 180 Kg

CV 200 Options



GAS INJECTION

Installation for Inert gas in the bag



OVAL LID

Oval methacrylate lid



VACUUM PUMP

63m³/h. BUSCH Vacuum pump



CUT-OFF SEAL OF THE BAGS

Seal bar with cut



1-2 CUT-OFF SEAL

1-2 Cut-off seal



3RD SEAL BAR



CV800

Compact dimensions

1005 x 835 x 1010 mm
(Long x Width x High)



Access model with large capacity. Robust and reliable. Machine capable of absorbing heavy workloads, up to two continuous shifts at full capacity.

CHARACTERISTICS

- Solid, simple and robust construction in stainless steel.
- Control panel with 20 programs.
- Progressive air inlet -softair-.
- Sensor vacuum control.
- Control of sealing time (seconds).
- Stop key to interrupt the cycle (with or without sealing).
- Flat methacrylate lid.
- Easy maintenance.

Inner chamber dimensions:

880 x 630 x 170 mm
880 x 630 x 320 mm (oval lid option)

Seal bars:

- a) 1 x 800 mm + 1 x 550 mm
- b) 2 x 830 mm (useful space 550 mm)
- c) 2 x 550 mm (useful space 800 mm)

Vacuum Pump: Busch 63 m³/h

Connection: 380 v – 3F (220v)

Weight: 350 Kg

CV800 Options



GAS INJECTION
Installation of Gas injection in the bag.



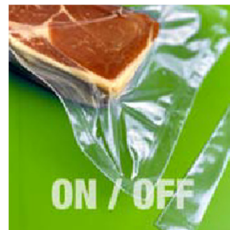
OVAL LID
Oval methacrylate lid



VACUUM PUMP
100m³/h. Busch Vacuum pump



CUT-OFF SEAL OF THE BAGS
Seal bar with cut



1-2 CUT-OFF SEAL
Adjustable cut independent of sealing



SEAL BAR
3rd seal bar



CV1000

Big and powerful

1180 x 835 x 1010 mm
(Long x Width x High)



Best seller model of vacuum packaging machine. Manufactured since 1980, high robustness for maximum durability. Machine capable of absorbing heavy workloads, up to two continuous shifts at full capacity.

CHARACTERISTICS

- Solid, simple and robust construction in stainless steel.
- Control panel with 20 programs.
- Progressive air inlet -softair-.
- Sensor vacuum control.
- Control of sealing time (seconds).
- Stop key to interrupt the cycle (with or without sealing).
- Flat methacrylate lid.
- Easy maintenance.

Inner chamber dimensions:

1054 x 630 x 170 mm
1054 x 630 x 340 mm (oval lid option)

Seal bars

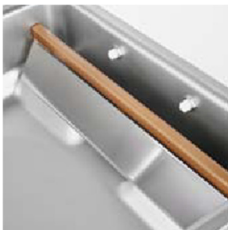
- a) 1 x 900 mm + 1 x 550 mm
- b) 2 x 1000 mm useful space 550 mm)
- c) 2 x 550 mm (useful space 900 mm)

Vacuum Pump: Busch 100 m³/h

Connection: 380 v – 3F (220v)

Weight: 390 Kg

CV1000 Options



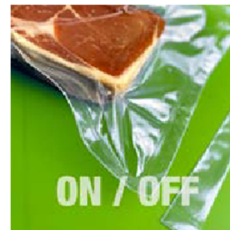
GAS INJECTION
Installation of gas injection in the bag.



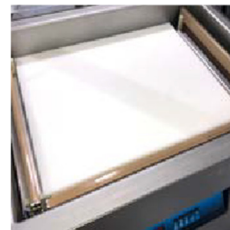
OVAL LID
Methacrylate oval lid



CUT-OFF SEAL
Seal bar with cut



1-2 CUT-OFF SEAL



SEAL BAR
3rd and 4th seal bar





MEDIUM+ Serie

Series of industrial packaging machines with multiple configuration options and customizable according to each product. Possibility of synchronizing one or several units in line for continuous productions. Option of incorporating conveyor belt inside the chamber for the automatic unloading of bags. Direct connection to the ZERMAT series of shrink tanks and drying tunnel. Hard and versatile, ready to take on high daily productions in a fast and comfortable rhythm for the user.

MEDIUM+

CV1000+

Large, robust, configurable

1180 x 870 x 1250 mm

(Long x Width x High)



Vacuum packaging machine with the possibility of automating the chamber movement and the unloading of bags, tapes, other equipment or reception tables. Seal bars in various configurations available.

CHARACTERISTICS

- Solid and robust construction in stainless steel.
- Control panel with 20 programs.
- Progressive air inlet -softair-.
- Control of sealing time.
- Easy maintenance.

Inner chamber dimensions:

1054 x 630 x 220 mm

880x630x280 mm (with extra high chamber)

Seal bars:

a) 1 x 900 mm + 1 x 550 mm

b) 2 x 1000 mm

c) 2 x 900 + 1 x 550 mm

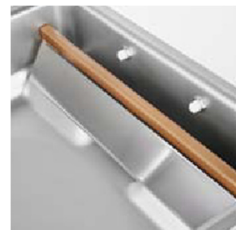
Vacuum Pump: Busch 100 m³/h (160-250 m³/h)

Connection: 380v 3F (22 v)

Power: 3,5 Kw

Weight: 435 Kg

CV1000+ Options



GAS INJECTION
Installation of Gas injection in the bag.



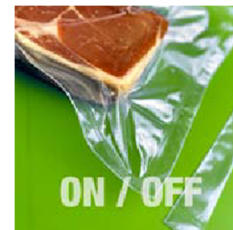
AUTOMATIC LID
Lid with automatic movement.



UNLOADING BELT
Product ejecting interior belt.



CUT-OFF SEAL
Seal bar with cut.



1-2 CUT-OFF SEAL
Adjustable cut independent of sealing.



SIDE BELT
Synchronized lateral tape for product input



CHAMBER
Extra high chamber.



VACUUM PUMP
160m³/h Busch Vacuum pump (250 m³/h external).



SEAL BAR
3rd seal bar.



EXTERNAL PUMP
Installation for external Vacuum pump.

CV1000PRO

The hardest and most productive

1180 x 850 x 1600 mm

(Long x Width x High)



TWIN OPTION
One user controls two equipment

Automatic equipment with continuous cycle programming or activation by "hands-free" foot sensor. Inner tape for automatic bag unloading. Seal bars located on the lid.

CHARACTERISTICS

- Solid and robust construction in stainless steel.
- Control panel with 20 programs.
- Progressive air inlet -softair-.
- Control of sealing time.
- Easy maintenance.

Inner chamber dimensions:

1054 x 630 x 220 mm

Seal bars:

a) 2 x 1000 mm (useful space 550 mm)

b) 1 x 900 mm + 1 x 550 mm

c) 2 x 900 mm + 1 x 550 mm (optional)

Vacuum Pump: Busch 160 m³/h (250 m³/h exterior)

Connection: 3F - 380v - (220v)

Power: 5,5 Kw

Weight: 490 Kg

Double chamber system with the following advantages:

- Each equipment is independent and does not depend on the other (greater reliability in daily production).
- The two equipment are loaded with product by a single operator.
- The operator must not travel to load bags.
- Belt inside each chamber to carry out automatic bag unloading.
- The two equipment always unload the bags at the same point, this can be a transport belt or fixed table.
- Synchronizable configuration with shrinking line and automatic drying.
- Possibility of making the investment in two phases.
- Fast and versatile equipment, suitable for high production packaging of all kinds of products, from cheeses and cured sausages, to fresh meats, fish or various components.



Cycle activation by foot sensor.



Easy access for maintenance.



Direct synchronization to shrink-drying.

CV1100+

Simple and large chamber

880 x 1200 x 1125 mm
(Long x Width x High)



Model with a large vacuum chamber and the possibility of incorporating an internal belt for the automatic unloading of bags. Manually operated lid. Aerial seal bars, located in the chamber. Various possibilities of configuration and arrangement of sealing bars.

CHARACTERISTICS

- Solid and robust construction in stainless steel.
- Control panel with memorizable programs.
- Marinating / impregnation program.
- progressive air inlet -softair-.
- Control of sealing time.
- Easy access to components for maintenance.

Inner chamber dimensions: 1100 x 670 x 270 mm

Seal bars:

- a) 1 x 1050 mm + 1 x 620 mm
- b) 2 x 1100 mm (useful space 590mm)
- c) 2 x 670 mm (useful space 1000 mm)
- d) 1 x 1000mm + 2 x 620 mm

Vacuum Pump: Busch 160m³/h (300m³/h)

Connection: 380v 3F (220v)

Power: 5'5 Kw

Weight: 460 Kg

CV1400

Extra-large chamber

1450 x 1140 x 1350 mm
(Long x Width x High)



Model with extra-large vacuum chamber and possibility of incorporating an internal belt for automatic bag unloading. Manually operated lid. Possibility of front seal bar or double bar in "L" position.

CHARACTERISTICS

- Solid and robust construction in stainless steel.
- Control panel with 20 programs.
- Progressive air intake -softair-.
- Control of sealing time.
- Easy maintenance.

Inner chamber dimensions: 1350 x 900 x 220 mm

Seal bars:

- a) 1 x 1300 mm
- b) 1 x 1220 mm + 1 x 850 mm

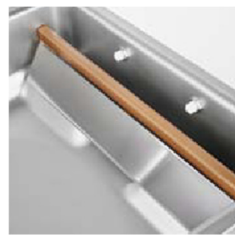
Vacuum Pump: Busch 250 m³/h (300 m³/h)

Connection: 380v 3F (220v)

Power: 7 Kw

Weight: 640 Kg

CV1100+ / CV1400 Options



GAS INJECTION
Installation of gas injection in the bag.



SEAL BAR
3rd seal bar.



UNLOADING BELT
Product ejecting interior belt



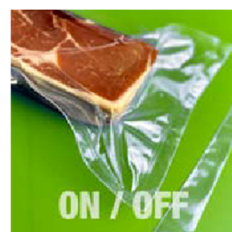
ACS CONTROL PANEL
Memorizable programs and extra functions.



VACUUM PUMP
300m³/h Busch vacuum pump.



CUT-OFF SEAL
Seal bar with cut.



1-2 CUT-OFF SEAL
Adjustable cut independent of sealing.



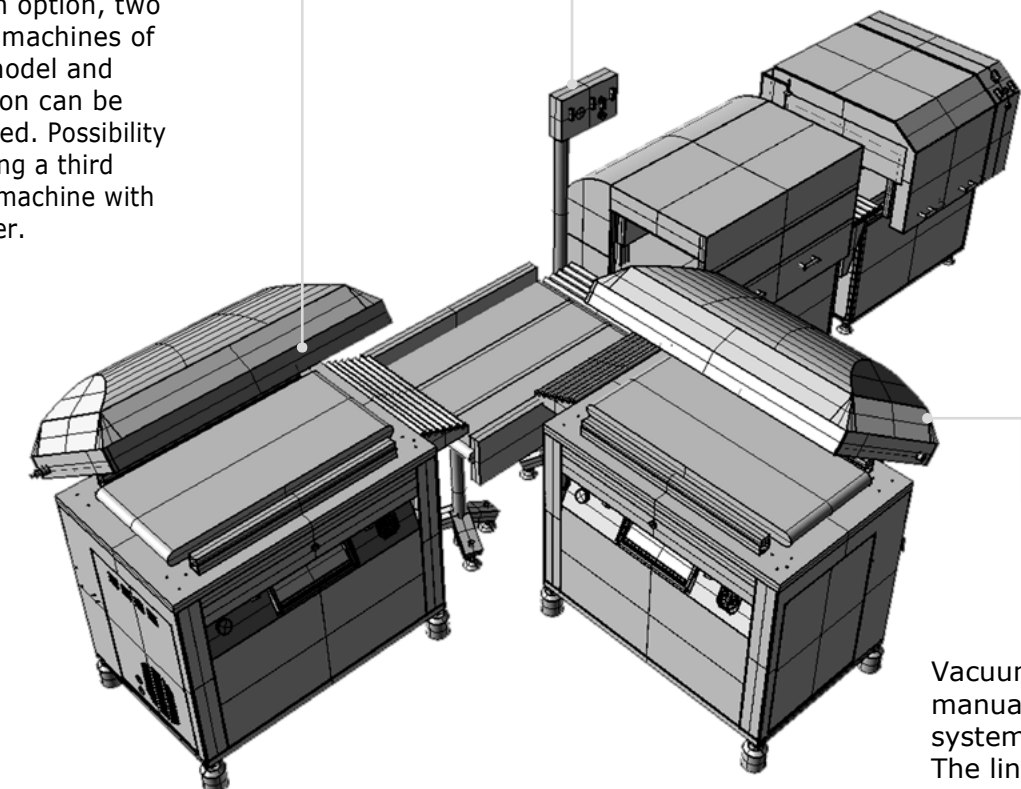
BI-ACTIVE SEALING
Top and bottom sealing system.



EXTERNAL VACUUM PUMP
Installation for external vacuum pump.

TWIN OPTION:

Configurable line.
In the Twin option, two packaging machines of different model and configuration can be synchronized. Possibility of integrating a third packaging machine with another user.



Automatic process.
Advance of bags through the shrink and continuous drying, drive. Belts managed by the TR10 Shrink tank.

Vacuum chambers with manual or automatic system.
The line only requires that the chamber is equipped with an automatic bag discharge system.



LARGE Series

Double chamber packaging machines. Five models with different chamber dimensions. Sealing bars on the top of chamber. Simple, robust and hygienic design. High power vacuum pumps and control panel in two configurations. Machines prepared for the high productions and several shifts of daily operations. Versatile for vacuum packaging of any product and robust to offer a long service life.

LARGE

DC500

Small and productive

1545 x 900 x 1175 mm

(Long x Width x High)



Medium capacity packaging machine. Powerful 100m³ / h Busch vacuum pump to offer continuous productions with high performance.

CHARACTERISTICS

- Stainless steel construction.
- Control panel with 10 programs.
- Progressive air inlet -softair-.
- Sensor vacuum control.
- Control of sealing time (seconds).
- Vacuum pump maintenance program.
- Stop key to interrupt the cycle (with or without sealing).
- Easy maintenance.

Inner chamber dimensions: 620x500x240 mm

Seal bars: 2 x 620 mm (useful space 500 mm)

Vacuum Pump: Busch 100 m³/h

Connection: 380v 3F (220v)

Power: 3'5 Kw

Weight: 345 Kg

DC750

Compact and powerful

1545 x 1150 x 1180 mm

(Long x Width x High)



Large capacity model and affordable price. This packaging machine is the perfect tool to achieve high production while occupying the minimum space. Equipped with the robust and fast Busch 160m³ / h vacuum pump.

CHARACTERISTICS

- Stainless steel construction.
- Control panel with 10 programs.
- Progressive air inlet -softair-.
- Sensor vacuum control.
- Control of sealing time (seconds).
- Vacuum pump maintenance program.
- Stop key to interrupt the cycle (with or without sealing).
- Easy maintenance.

Inner chamber dimensions: 620 x 840 x 180 mm

Seal bars:

a) 2 x 620 mm (useful space 750 mm)

b) 2 x 840 mm (useful space 530 mm)

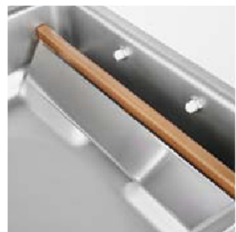
Vacuum pump: Busch 160 m³/h

Connection: 380v 3F (220v)

Power: 5'5 Kw

Weight: 537 Kg

DC500 Options



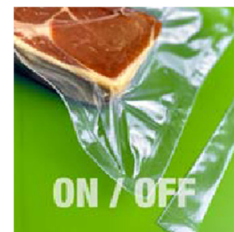
GAS INJECTION
Installation of gas injection in the bag.



ACS CONTROL PANEL
Memorable Programs and extra function



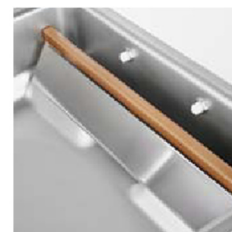
CUT-OFF SEAL
SEAL
Seal bar with cut.



1-2 CUT-OFF SEAL
DESCONECTABLE
Adjustable cut independent of sealing.



DC750 Options



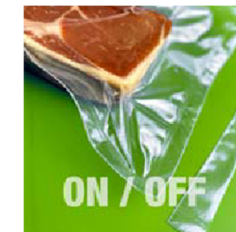
GAS INJECTION
Installation of gas injection in the bag



ACS CONTROL PANEL
Memorable Programs and extra functions.



CUT-OFF SEAL
Seal bar with cut.



1-2 CUT-OFF SEAL
Adjustable cut
Independent of Sealing.



BI-ACTIVE SEALING
Top and bottom
Sealing system.



DC850

Reliable and versatile

1980 x 1230 x 1180 mm

(Long x Width x High)



Best-seller model.

Large capacity packaging machine and powerful 300m³ / h Busch vacuum pump.

CHARACTERISTICS

- Stainless steel construction.
- Control panel with 10 programs.
- progressive air inlet -softair-.
- Sensor vacuum control.
- Control of sealing time (seconds).
- Vacuum pump maintenance program.
- stop key to interrupt the cycle (with or without sealing).
- Easy maintenance.

Inner chamber dimensions: 840x830x255 mm

Seal bars: 2 x 840 mm (useful space 830 mm)

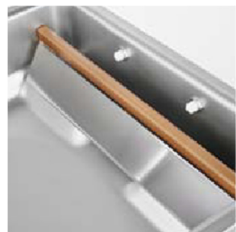
Vacuum Pump: Busch 300 m³/h

Connection: 380v 3F (220v)

Power: 9 Kw

Weight: 685 Kg

DC850 Options



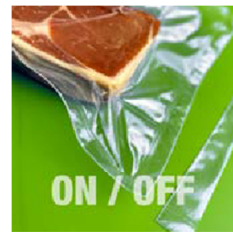
GAS INJECTION
Installation of gas injection in the bag.



ACS CONTROL PANEL
Memorable programs and extra functions.



CUT-OFF SEAL
Seal bar with cut.



1-2 CUT-OFF SEAL
Adjustable cut independent of sealing.



BI-ACTIVE SEALING
Top and bottom sealing system.



AUTOMATIC LID
Lid with automatic movement.



DC950

Large and efficient

2420 x 1210 x 1130 mm

(Long x Width x High)



High capacity chamber for the packaging of large parts or heavy quantities of small bags. Possibility of automating the movement of the chamber. Possibility of three seal bars. 300m³ / h Busch vacuum pump.

CHARACTERISTICS

- Stainless steel construction.
- Control panel with 10 programs.
- progressive air inlet -softair-.
- Sensor vacuum control.
- Control of sealing time (seconds).
- Vacuum pump maintenance program.
- stop key to interrupt the cycle (with or without sealing).
- Easy maintenance.

Inner chamber dimensions: 1100x850x280 mm

Seal bars:

a) 2 x 1100 mm (useful space 730 mm)

b) 2 x 850 mm (useful space 1100 mm)

c) 3 x 1100 mm (useful space 470 / 230 mm)

Vacuum Pump: Busch 300 m³/h

Connection: 380v 3F (220v)

Power: 9 Kw

Weight: 767 Kg

DC950 Options



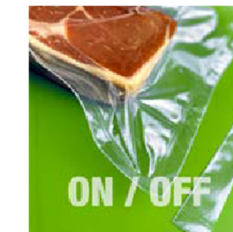
GAS INJECTION
Installation of gas injection in the bag.



ACS CONTROL PANEL
Memorable programs and extra functions.



CUT-OFF SEAL
Seal bar with cut.



1-2 CUT-OFF SEAL
Adjustable cut independent of sealing.



BI-ACTIVE SEALING
Top and bottom sealing system.



AUTOMATIC LID
Lid with automatic movement.



SEAL BAR
3rd seal bar



LID SUPPLEMENTS
Supplements in the chamber for gas saving.



EXTRALARGE Series

Automatic packaging machines for high production. Two continuous packaging systems and the possibility of synchronizing in line for connection with other packaging machines or continuous tanks for the shrink and drying of bags. High power vacuum pumps and automatism in each process to increase production. Maximum user comfort by the loading of bags with the automated unloading system.

EXTRALARGE

CV910

Automatic continuous packaging

2850 x 1000 x 2015 mm

(Long x Width x High)



This machine is designed to synchronize discharge to automatic drying and shrink tanks. Vacuum packaging machine with 100% automated movement. Continuous automatic loading and unloading of bags. The operator only has to position the bags to be packed on the conveyor belt, the machine is in charge of finishing the process. Model adaptable to automated process lines with robotic bag loading.

CHARACTERISTICS

- Stainless steel construction.
- Control panel with 20 programs.
- Progressive air inlet -softair-.
- Sensor vacuum control.
- Control of sealing and cutting time.

Inner chamber dimensions: 1000x550x220 mm

Seal bars: 2 x 1000 mm (useful space 550 mm)
(+ 1 x 550 mm removable)

Vacuum Pump: Busch 250 m³/h

Connection: 380v – 3F (220v)

Power: 7,8 Kw

Weight: 780 Kg

Choice of work direction.
Manufacture for unloading bags to the right or left.



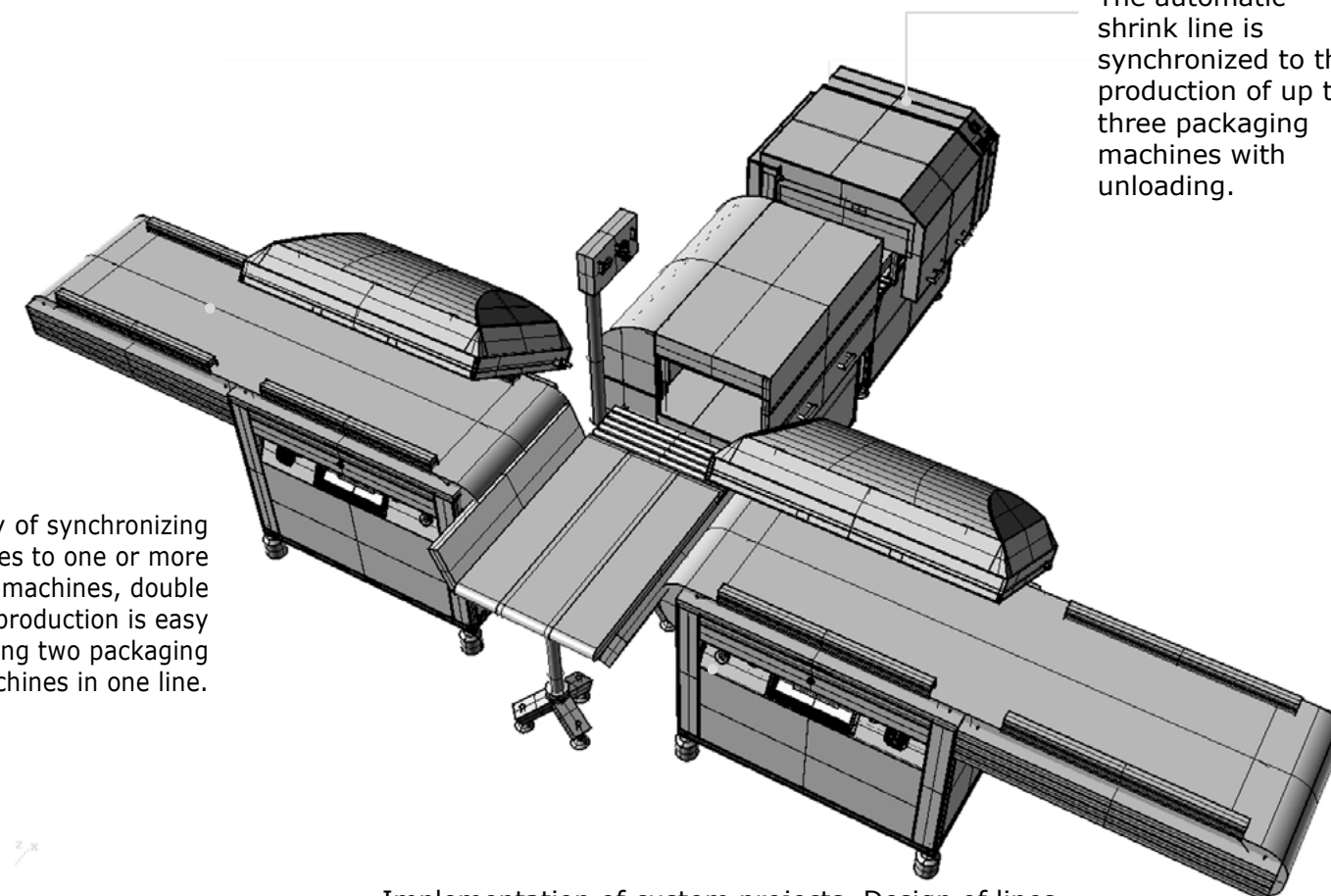
Vacuum packaging line with shrinking and drying. Synchronizable machines to carry out the process automatically

Open loading area for the easy placement and positioning of the bags.

Models synchronizable to automatic lines

ZERMAT

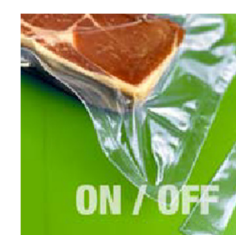
Shrink- and drying line.
Shrinking process with short cycle.
The automatic shrink line is synchronized to the production of up to three packaging machines with unloading.



Possibility of synchronizing lines to one or more packaging machines, double the production is easy adapting two packaging machines in one line.

Implementation of custom projects. Design of lines adapted to the space of the facilities and daily required production.

CV910 Options



1-2 UT-OFF SEAL
Adjustable cut independent of sealing.



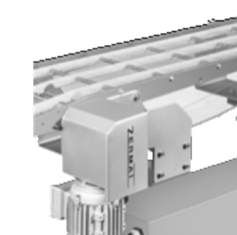
VACUUM PUMP
300m³/h. BUSCH
Vacuum pump.



ROOTS
500m³/h.
Roots BUSCH



EXTERNAL
VACUUM PUMP
Installation for an external vacuum pump.



CONNECTION BELTS
Design and manufacture of conveyor belts.

DC950PRO

High production and heavy loads

1130 x 2425 x 1240 mm

(Long x Width x High)



Synchronizable model to automatic vacuum and shrinking packaging lines + drying of the bags

Automatic machine for the packaging of products in small or large format and heavy quantities. Its completely autonomous work operation allows the user to avoid any concern; he only has to position the bags on the conveyor belts, the rest is handled by the DC950Pro machine. It sets the pace of work, guaranteeing a continuous and uniform productivity in each operating shift.

CHARACTERISTICS

- Integral construction in stainless steel AISI 304.
- Lid with automatic movement, activated by the user or programmable for continuous work operation.
- Complete vacuum cycle: from 25 to 55 sec.
- Seal bars with double bag sealing or single sealing + cut-off sealing (independent adjustable welding level and cut).
- Flat inner chamber with removable conveyor belt for easy cleaning.

Inner chamber dimensions: 1000x890x280 mm

Seal bars: 2 x 890 mm (useful space 1000 mm)

Vacuum Pump: Busch 300 m³/h

Connection: 380v - 3F (220v)

Power: 9 Kw

Weight: 867 Kg

ACS Control panel with the following functions:

- Vacuum control by time (seconds) and vacuum sensor.
- Control of sealing time (seconds) and cooling of the seal bar.
- 'Stop' button for immediate interruption of the cycle.
- 'Stop vacuum' actuator to stop the vacuum level manually.
- Storage of memorizable programs.
- Configuration of technical values (sensors, valves and function checks).
- Text and value settings on printable labels.
- Check of produced cycles and working hours, for periodic checks and maintenance.

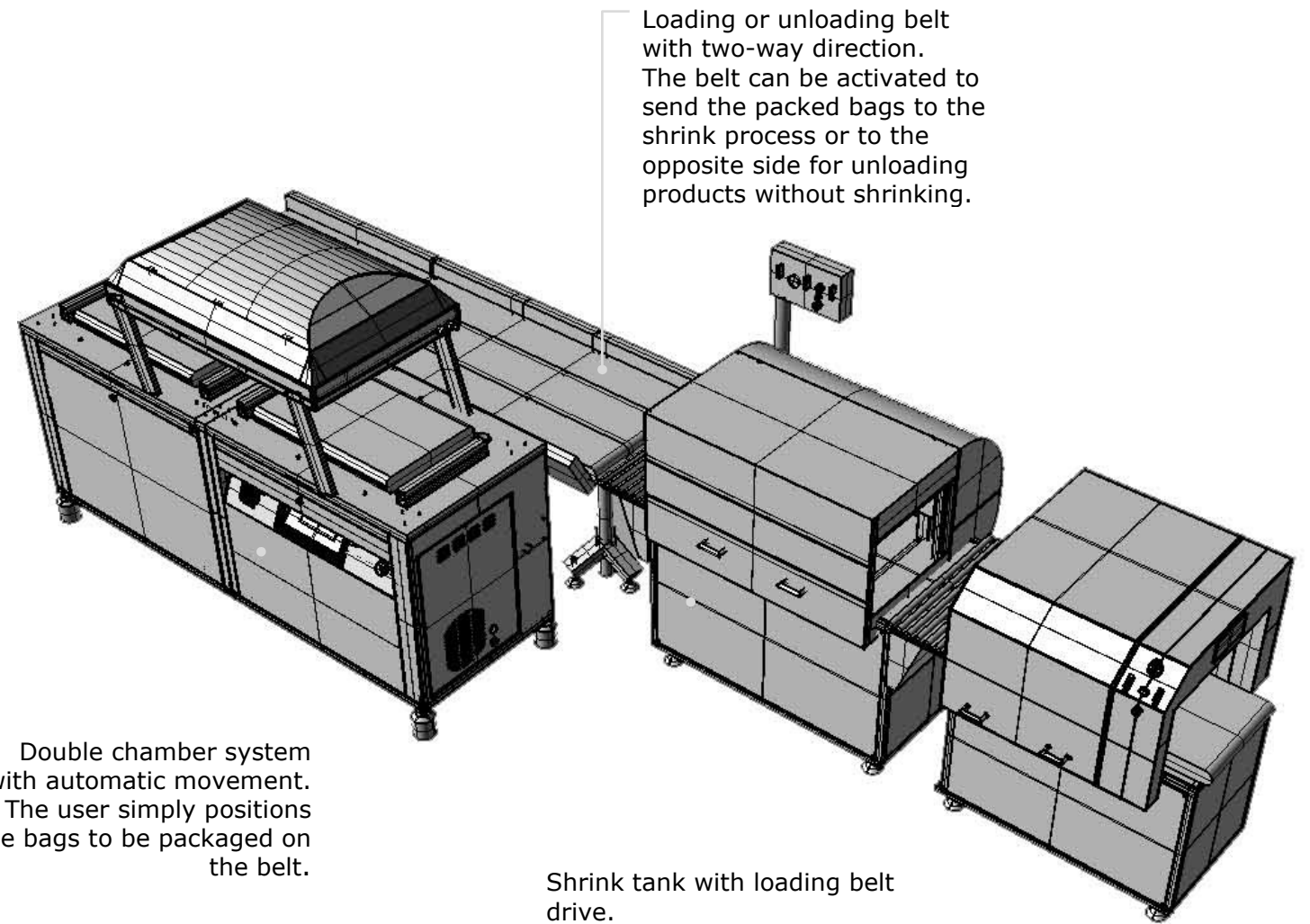


Automatic unloading of the belts



Automatic lid.

For the packaging of large products in continuous



Loading or unloading belt with two-way direction. The belt can be activated to send the packed bags to the shrink process or to the opposite side for unloading products without shrinking.

Double chamber system with automatic movement. The user simply positions the bags to be packaged on the belt.

Shrink tank with loading belt drive. The TR10 tank manages the advance of bags by activating and stopping the loading belt.

CV950PRO Options



CUT-OFF SEAL
Independent to the sealing.



ROOTS
500m³/h
Roots BUSCH



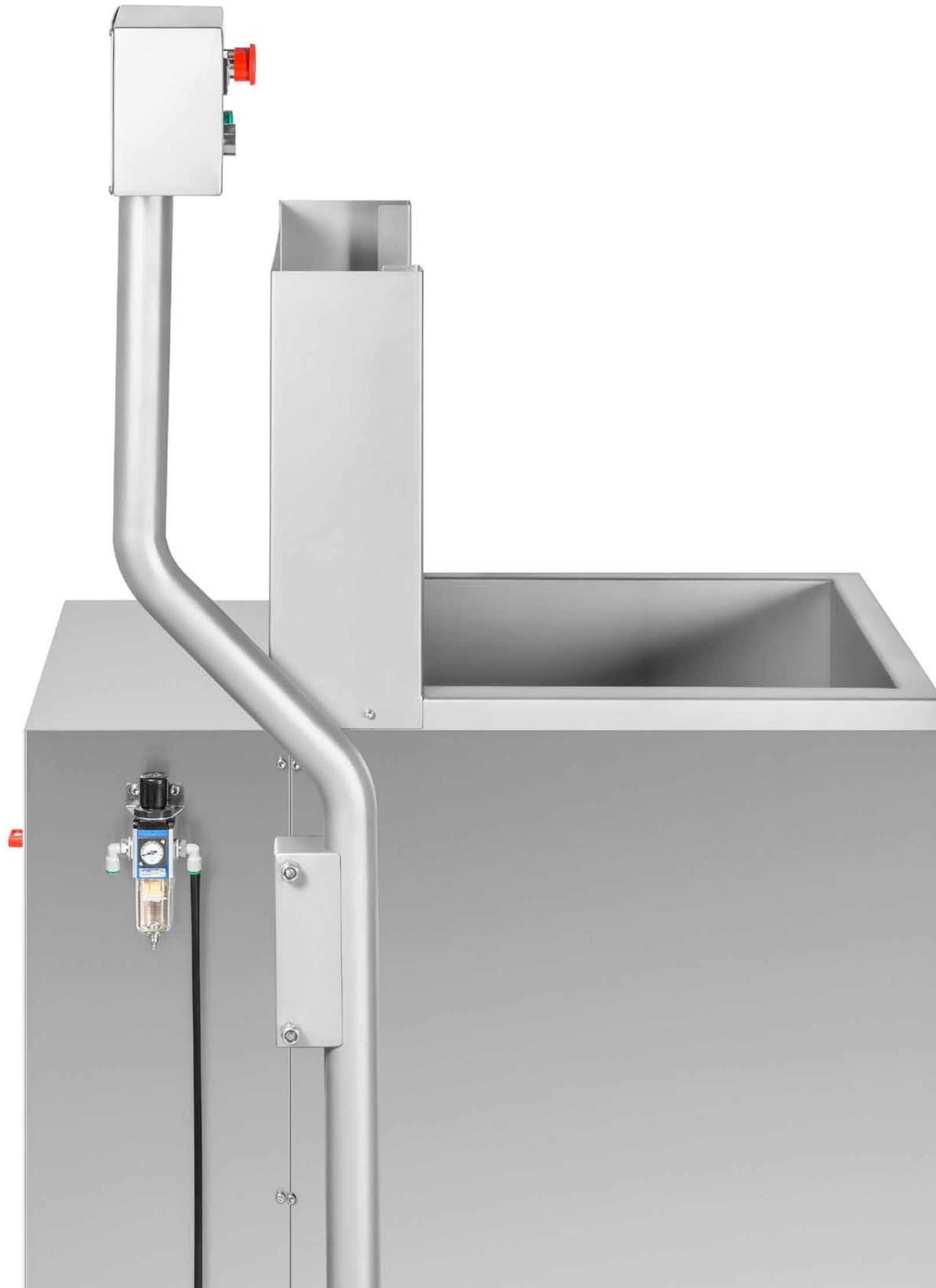
EXTERNAL PUMP
Installation for an external vacuum pump.



BACK BELT
To send products online. (2600x600 mm)

Shrinking and Drying

Series of machines to complement the vacuum packaging. From the simple and robust TR7 model, for low productions, to the automatic TR8 and TR10 models with the possibility of direct synchronization to continuous packaging lines. DR1 drying tunnel for direct connection to the outlet of the shrinking.



SHRINKING and DRYING

TR7

Simple and robust

840 x 900 x 1450 mm
(Long x Width x High)



Solid and extra robust construction in stainless steel. Adjustable programming of the water temperature. Simple operating machine; by pressing the button, the products are automatically immersed in the water.

Programmable dive time. Direct water filling in the tank, emptied through a lateral tap. Height adjustable support legs or construction on wheels. Minimal maintenance.

CHARACTERISTICS

- Adjustable programming of the water temperature.
- Machine with simple operation, by actuating the button, it automatically immerses the products in the water.
- Direct water filling to the tank, emptied through a lateral tap.
- Minimal maintenance.
- Requires pneumatic connection for 8mm (6-8 Bar) tube.

Inner platform dimensions: 580 x 440 mm

Maximum immersion depth: 280 mm

Connection: 380v 3F (220v)

Pneumatic connection: 6-8 Bar

Power: 11Kw

TR7 Options



FEET SUPPORT
Height adjustable support feet (without wheels)



STEAM EXTRACTION
upper roof for steam extraction.



*Vacuum packaging with shrank finish



Tap to drain the tank faster.

TR8

Automatic and economic

1170 x 1050 x 1800 mm
(Long x Width x High))



Automatic process shrink tank. 100% stainless construction. Programmable water temperature and bag immersion times. Product input sensor for automatic cycle. Available in configuration for automatic download of products to the right or to the left.

CHARACTERISTICS

- Automatic working system.
- Independent operation.
- Automatic water inlet with level detector.
- Submersible roller tray.
- Roller tray at the entrance and exit.
- Easily removable inner tray.
- Programmable water temperature and dive time.
- Control panel with 20 editable programs.
- Adjustable working height.
- Shrink tank synchronizable with the majority of packaging lines.

Inclined inner platform dimensions:

600 x 800 mm

Maximum immersion depth: 250 mm

Connection: 380v 3F (220v)

Pneumatic connection: 6-8 Bar

Power: 22Kw

TR8 Options



WATER HEATING
Steam water heating.

1200 x 600 mm

SHORT LOADING BELT
Continuous loading belt.

In TR8, TR10 and DR1 models



WORKING DIRECTION
Can be manufactured with left or right product discharge.

2600 x 600 mm

LONG LOADING BELT
Synchronized loading belt.



TR10

More possibilities, submersible conveyor

1420 x 1050 x 1800 mm
(Long x Width x High))



Continuous shrinking. Ideal for the high production

TR10 Options



WATER HEATING
Steam water heating.

1200 x 600 mm

SHORT
LOADING BELT
Continuous loading belt.

2600 x 600 mm

LONG
LOADING BELT
Synchronized loading belt.



TR10 Shrink tank, perfect for the shrinking of large pieces

Large capacity shrinking tank machine with continuous function. The inner belt enters and immerses the products the desired time, ascends and extracts. Ideal for high production lines.

CHARACTERISTICS

- Autonomous working system.
- Control panel with temperature selector and 20 editable program settings.
- Automatic water filling (requires water connection).
- Sensor for bag entry detection.
- Programmable entry - immersion - expulsion times.
- Submersible and easily removable conveyor belt.
- Independent cycle operation, can be adapted to any vacuum packaging machine with automatic discharge.
- 100x100 construction in stainless steel AISI304.
- Hermetic electrical panel. Top brand components.
- Water heating through electrical resistances or connection to steam supply.
- Possibility of manufacturing the machine with the two water heating systems.
- Fast water extraction (2 " tap).
- Easy cleaning.
- minimal maintenance.

Inner dimensions: 1145 x 600 x 418 mm
Immersion depth: 300 mm
Electric connection: 380v 3F (220v)
Pneumatic connection: 6-8 bar
Power: 22 Kw



Entrance ramp with photocell for product detection.

DR1

Continuous drying tunnel

1200 x 800 x 1400 mm
(Long x Width x High))



Air knife drying system. Tunnel with conveyor belt. Minimal maintenance. Equipment designed for integration into automatic packaging line

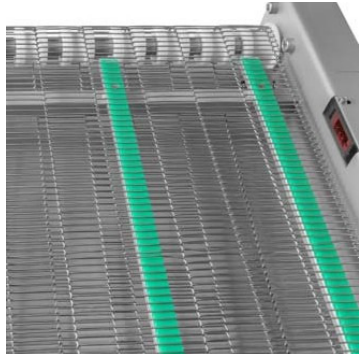
CHARACTERISTICS

- Tunnel with conveyor belt for continuous drying of the bag or any other product.
- Air knife drying system at room temperature connected to a high power turbine.
- Solid and robust construction in AISI304 stainless steel.
- Double air blower. Adjustable upper and lower output power.
- Adjustable belt speed to adjust the advance time of the products through the air barrier.
- Photocell for product entry detection; the turbine is activated-deactivated according to the advance of bags or pieces.

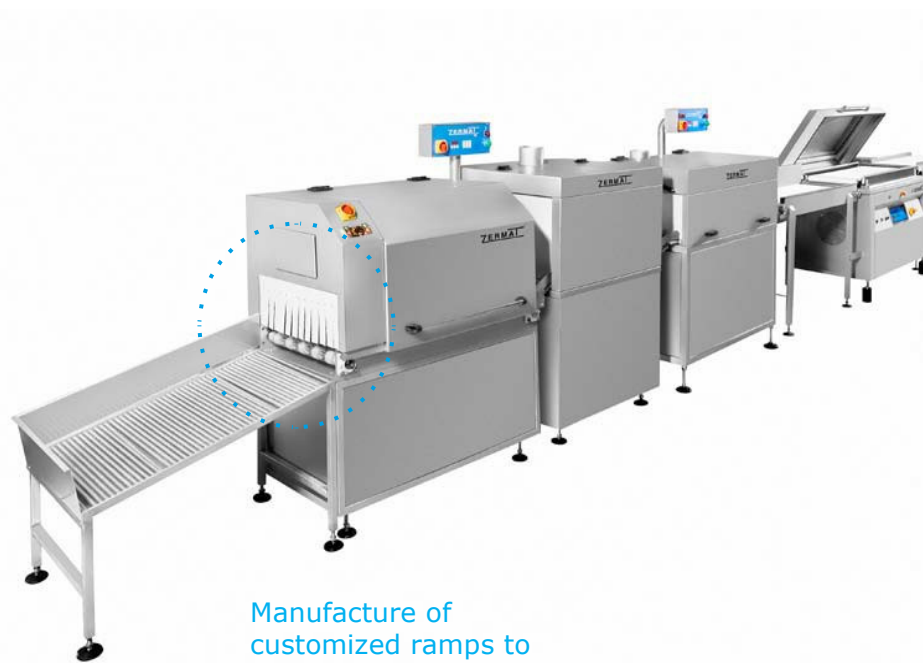
Width of conveyor belt 600 mm
Maximal high of product to be dried: 250 mm
Minimal high of product to be dried: 15 mm
Working speed: variable
Production: Continuous
Electric connection: 3F - 380v (3F - 220v)



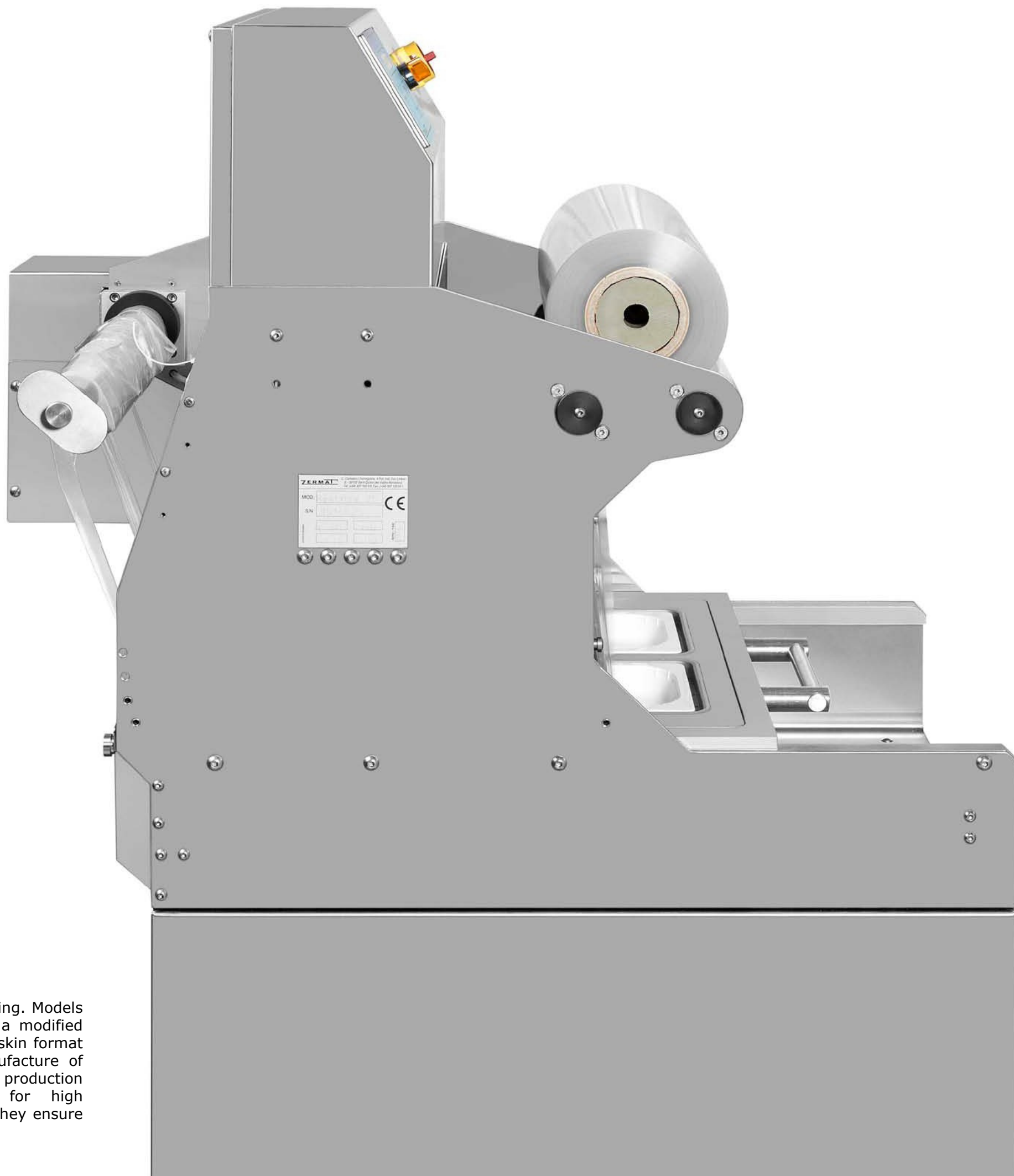
Protected control panel in a folding Drawer.



Conveyor belt with stainless steel mesh, with bag entry detection photocell.



Manufacture of customized ramps to adapt to the output of finished products.



Tray sealers Serie

Tray sealers machines for tray sealing. Models which allow vacuum packaging in a modified atmosphere through gas injection, skin format packaging or simple sealing. Manufacture of molds according to format. Low production equipment or automatic line for high performance. Robust and reliable, they ensure the perfect finish in each package.

Tray sealers

TB2 Vacuum + gas injection / skin

Packages always perfect

630 x 980 x 1.490 mm
(Long x Width x High)



* This equipment requires electrical connection + pneumatic connection (compressed air at 6-8 bar pressure).

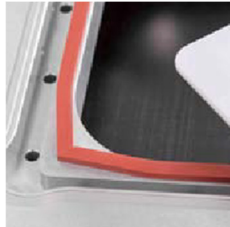
TB2 Options



PHOTOCELL DETECTION
For the packaging with printed film.



ADDITIONAL GASTRONORM MOLD
For sealing of standard formats.



ADDITIONAL MOLD TO CHOOSE
For special formats.



SKIN FUNCTION
Adaptation for the tray sealing in skin format. (TB2 Pro)



EASY OPEN SEALING
Flanged sealing system for easy opening.

Compact tray sealer with all available functions, single heat seal, single vacuum or vacuum + gas injection. Available with molds for packaging in skin material.

CHARACTERISTICS

- Simple and robust machine with ergonomic design for the user.
- Interchangeable molds in a few minutes.
- Compact and ergonomic design.
- Stainless steel and anodized aluminum construction.
- Sensor vacuum control.
- Vacuum pump integrated inside the cabinet.
- Control panel with memorizable programs.
- Programmable vacuum level and gas injection percentage.
- Perimeter cut of the upper film in the contour of the tray.
- Manufacture of molds tailored to each tray.
- Optional sealing system with film tab for easy opening.
- Integrated system for automatic winding and tensioning of the upper film.
- Control of sealing time (seconds) and adjustable mold temperature.
- Control panel with stop button to interrupt the cycle (with or without sealing).
- Film winder-collector arm with the possibility of reading printed film.

Maximal tray dimensions to be packed:

1/2 Gr. 325 x 265 x 115 mm.

Power: 2,3 Kw

Vacuum Pump: Busch 40 m³/h (optional 63 m³/h - 100 m³/h)

Weight: 235 Kg

TB3 Gas sweep without vacuum

Simple and compact

560 x 580 x 660 mm
(Long x Width x High)



100% stainless steel construction. Robust and compact table-top design. Manufacture of custom molds for each tray. Easy and intuitive control panel.

CHARACTERISTICS

- 100% stainless steel (aisi304) and anodized aluminum construction.
- Robust and compact design, table-top construction.
- Interchangeable tray molds for operations with different formats.
- Maximum mold size; for 325 x 265 x 120mm trays.
- Upper film with tensioning and cutting system on the perimeter of the tray.
- Programmable percentage and gas injection inlet pressure.
- Time programmable tray sealing, adjustable to each coil material.
- Fast and comfortable working operation.
- Allows the injection of any gas mixture.
- Robust support for the film reel.
- System for tensioning the incorporated film.
- Easy change of molds.
- Control panel with ACS touch screen.
- Manufacture adapted to each tray.
- 100 memorizable programs.

Maximal mold dimensions:

325 x 265 x 120 mm (for 1/2 gr trays)

Power: 0,5 Kw

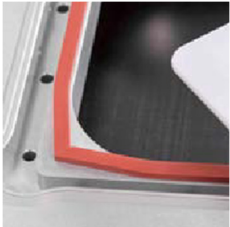
Electric connection: 1F -220v

Pneumatic connection: 6 Bar

TB3 Options



ADDITIONAL GASTRONORM MOLD
For sealing of standard formats



ADDITIONAL MOLD TO CHOOSE
For special formats.



EASY OPEN SEALING
Flanged sealing system for easy opening.



TROLLEY
Inox support table with wheels.

TB4 Vacuum + gas injection / skin

High trays production

2595 x 940 x 1725 mm

(Long x Width x High)



Stainless steel construction, robust and compact. Model with automatic system for loading and unloading of trays. Manufacture of molds adapted to each tray. Easy exchange of molds. Easy and intuitive control panel.

CHARACTERISTICS

- Simple, robust and reliable equipment.
- 100% electrical operation, it does not require compressed air connection.
- Easily interchangeable molds.
- Extra compact design.
- Control of vacuum and compensation-injection of gas by sensor.
- Configurable programs.
- Simple and basic maintenance.
- Easy access to all components.

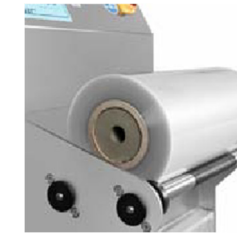
Maximal tray dimensions to be packed:

1/2 Gr. 325 x 265 x 115 mm

Power: 5,8 kw

Vacuum Pump: Busch 63 m³/h (100 m³/h)

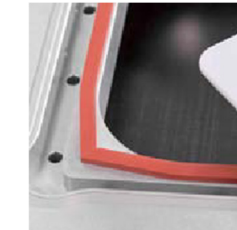
TB4 Options



PHOTOCELL DETECTION
For the packaging with printed film.



ADDITIONAL GASTRONORM MOLD
For sealing of standard formats.



ADDITIONAL MOLD TO CHOOSE
For special formats.



SKIN FUNCTION
Adaptation for the tray sealing in skin format. (TB4 Pro)



EASY OPEN SEALING
Flanged sealing system for easy opening.

Film coil
Easy to change

Control panel
Memorable programs.

Output
motorized eject Belt.

Entrance of
drag chains for the
trays transport.



Easy and comfortable user
access for changing
molds in three steps



ACCESSORIES

Complements for the vacuum packaging to make tasks easier for the user. Instruments to control the correct level and quality of vacuum in the machine or checking packages. In addition, conveyor belts are manufactured to adapt to each automatic line project.

ACCESSORIES

SR 90

Casing feeder

240 x 320 x 480 mm
(Long x Width x High)

1st

Machine designed and manufactured by ZERMAT in continuous production since 1979



Simple, easy and safe handling. Tool for the automatic placement of the casing in the stuffing machine. No electrical connection required, only pneumatic. Easy maintenance. Stainless steel construction.

VAC GIVER

Bagging agility

900 x 600 x 950 mm
(Long x Width x High)

Electric connection: 380v 3F - 220v 3F - 220v 1F
Package dimensions: 1 EUR Pallet 1200 x 800 x 1200 mm
It allows to work with bags: from 80 x 180 mm
Weight: 48 Kg

CHARACTERISTICS

- The construction of the machine is cart type and is configured with two fixed feet and two wheels so that the user can transport it to the working point.
- For the operation with this equipment, it is essential to use shrink bags, and that these come in continuous format glued by adhesive tape.
- * The bags must be of shrink material and come in a continuous format, glued to each other by means of an adhesive tape.
- Para la operativa con este equipo, es



Accessory for the assisted bagging of products, high agility of preparation. Simple, easy and safe handling. Stainless steel construction. Easy maintenance.

Advantages

- Greater working comfort for the user.
- Maximum agility in bagging products.
- Significant time savings and noticeable increase in production

VAC TESTER

Control and requirement

142 x 71 x 26 mm
(Long x Width x High)

Power supply: battery operated (9v included)
Weight: 165 gr
Working conditions: -20 +50 °C
Storage temperature: -10 ... +70 °C
Nominal temperature: 25°C
Measurement range: 0 a 1300 mbar
Sensor type: Absolute pressure probe
Measurement units: mbar, bar, kPa, mPa, mmHg, PSi, mH2o
Overload: máx. 4 bars abs.
Resolution: 1 mbar
Accuracy: influence of temp ± 0.4% FS // hysteresis and linearity ± 0.2% FS



Accessory for the control and verification of vacuum in packaging machines. Precision measurements:
0 to 1300mbar It is possible to connect to a PC for data transmission. Different security controls implemented on the main screen; the measured value appears.

OXYBABY Zermat

Exact control of every package

187 x 106 x 91 mm.
(Long x Width x High)

Power supply: Integrated rechargeable batteries
Weight: 600 gr
Measurement range: 0-100%
Sampling: automatic by aid with integrated pump
Answer time: máx. 10 sec.
Calibration: Easy calibration in two points
Disconnection: automatic after 2 min. inactive
Screen: digital with backlit
Analice gases: o2 en n2 o ar. / o2 y/o Co2 en: n2 o ar.
O2 Measurement mode: Electrochemical cell
CO2 measurement mode: iR absorption

*It includes case with charger, needles, filters, pads and O2 sensor.



Portable and wireless analyzer for the preventive control of the conservation time of packaged foods under modified atmosphere (MAP).
the ideal instrument for fast and accurate measurements next to the packaging machine.

Experience, Quality and Service



JAZZVAC ATOM



JAZZVAC MINI



JAZZVAC MINI+



JAZZVAC 30



JAZZVAC 35



JAZZVAC 42



JAZZVAC42+



BLUESVAC 35



BLUESVAC42



BLUESVAC 42+



JAZZVAC 42 VERTICAL



JAZZVAC 52



RAPVAC 32



RAPVAC 42



ROCKVAC 42



CV 100



CV 200



CV 800



CV 1000



CV1000+



CV1000Pro



CV1100+



CV 1400



DC 500



DC 750



DC 850



DC 950



CV 910



CV950PRO



VACUUM, SJRINK AND DRY



TR7



TR8



TR10



DR1



TB2



TB3



TB4



SR90



VACTESTER



VAC GIVER



ZERMAT OXYBABY



c)

e

e)

C!

